

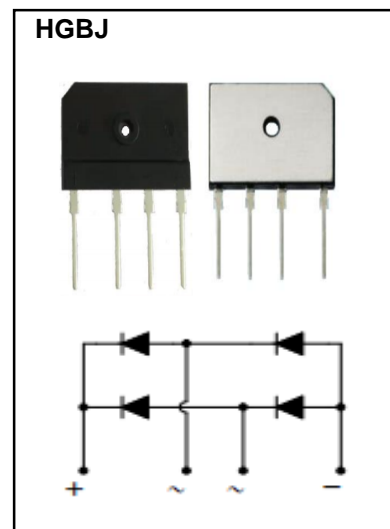
HGBJ Plastic-Encapsulate Bridge Rectifier

Features

- Glass passivated die construction
- Low forward voltage drop
- High current capability
- High surge current capability
- Plastic material-UL flammability 94V-0

Mechical Data

- Case: Molded plastic, HGBJ
- Terminals: Plated Leads Solderable per MIL-STD-202, Method 208
- Polarity: As Marked on Case
- Mounting Position: Any
- Marking: Type Number
- Lead Free: For RoHS / Lead Free Version
- Mounting torque: 8.0kgf.cm max
- Weight : About 7.2 grams



Maximum Ratings and Electrical Characteristics

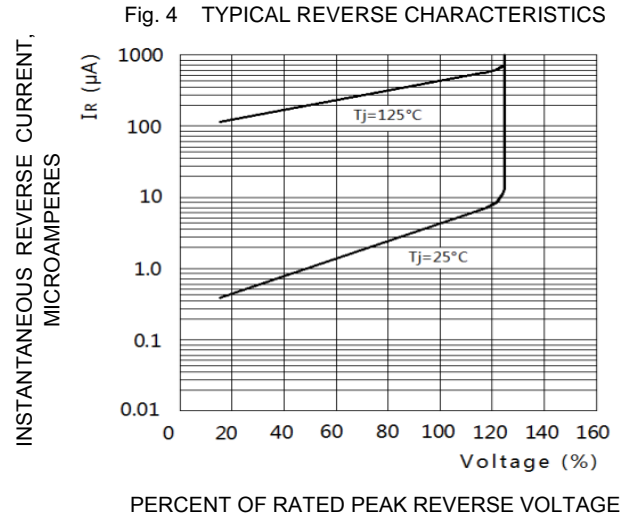
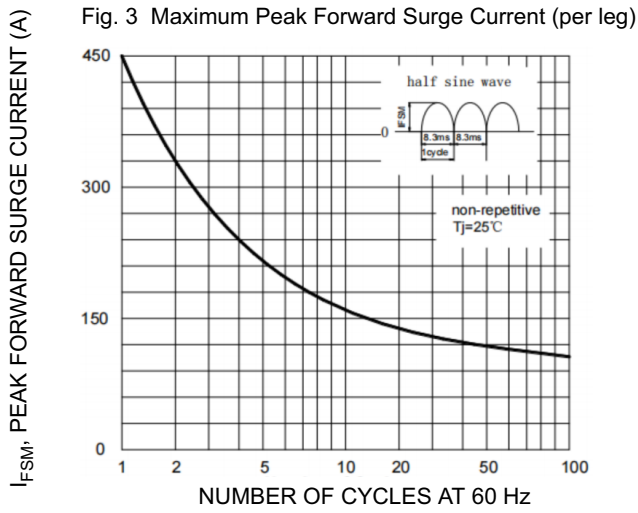
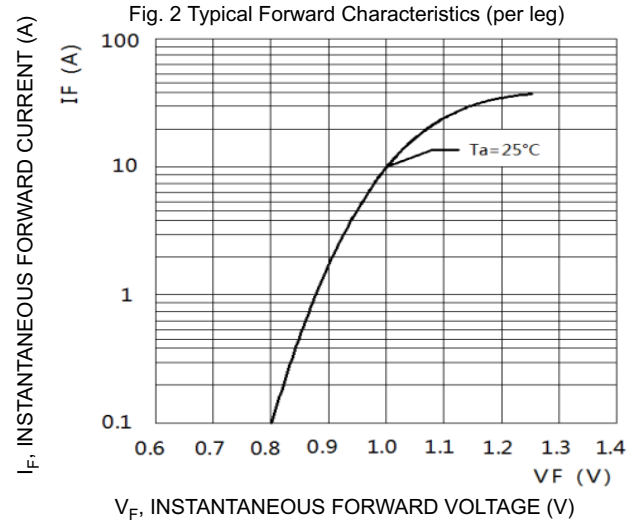
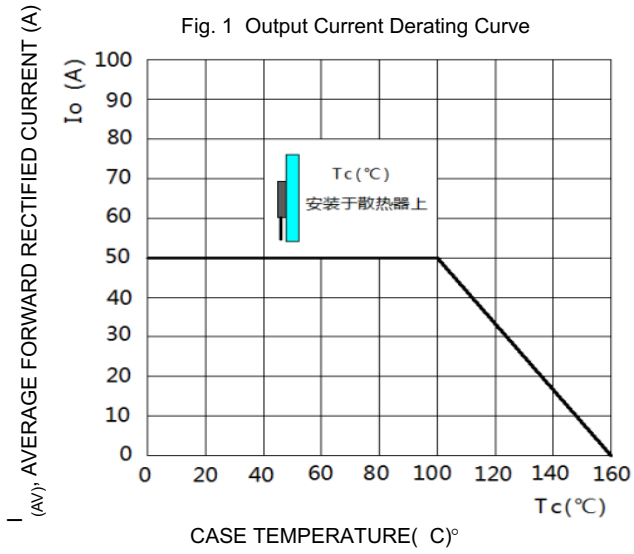
Rating at 25°C ambient temperature unless otherwise specified.
 Single Phase, half wave, 60Hz, resistive or inductive load.
 For capacitive load, derate current by 20%.

NUMBER	SYMBOL	HGBJ5006	HGBJ5008	HGBJ5010	HGBJ5012	UNITS
Peak Repetitive Reverse Voltage Working Peak Reverse Voltage DC Blocking Voltage	V_{RRM}	600	800	1000	1200	V
	V_{RWM}					
	V_{DC}					
RMS Reverse Voltage	V_{RMS}	420	560	700	840	V
Average Rectified Output Current @T =100 °C	$I_F(AV)$	50.0				A
Non-Repetitive Peak Forward Surge Current 8.3ms Single half sine-wave superimposed on rated load (JEDEC Method)	I_{FSM}	450				A
I^2t Rating for Fusing (t < 8.3ms)	I^2t	840.375				A ² s
Forward Voltage per element IF=25A	V_{FM}	1.1				V
Peak Reverse Current @T _A =25 °C At Rated DC Blocking Voltage @T _A =125 °C	I_R	5.0 500				uA
Typical Junction Capacitance per leg (Note1)	C_J	75				pF
Between junction and ambient, Without heatsink	$R_{\theta JA}$	22				°C/W
Between junction and case, With heatsink	$R_{\theta JC}$	0.69				
Operating and Storage Temperature Range	T_J, T_{STG}	-55to+150				°C

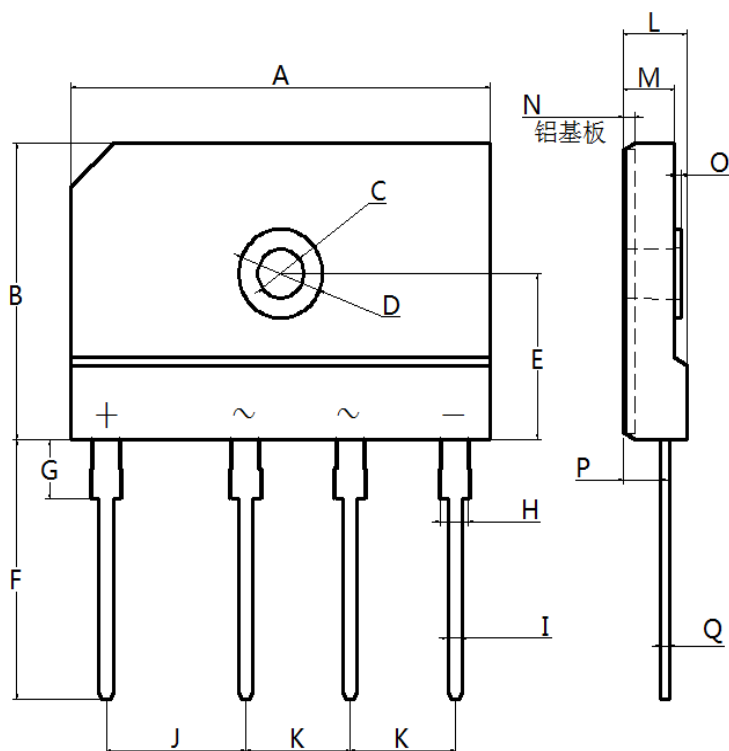
Note:

1. Measured at 1.0 MHz and applied reverse voltage of 4.0V DC.

Typical Characteristics



HGBJ Package Outline Dimensions



Dim.	Unit(mm)		Unit(inch)	
	Min.	Max.	Min.	Max.
A	29.70	30.30	1.169	1.193
B	19.70	20.30	0.776	0.799
C	3.10	3.50	0.122	0.138
D	5.80	6.20	0.228	0.244
E	11.00	11.40	0.433	0.449
F	17.00	18.00	0.669	0.709
G	3.50	4.50	0.138	0.177
H	1.80	2.20	0.071	0.087
I	0.90	1.10	0.035	0.043
J	9.80	10.20	0.386	0.402
K	7.30	7.70	0.287	0.303
L	4.40	4.80	0.173	0.189
M	3.50	3.90	0.138	0.154
N	0.75	0.95	0.030	0.037
O	0.30	0.70	0.012	0.028
P	2.50	2.90	0.098	0.114
Q	0.55	0.75	0.022	0.030